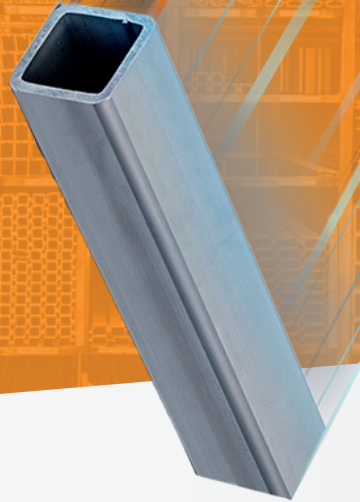




**Mercado
de Aceros**

CALIDAD EN ACERO
Libro de Pesos Teóricos.

#especialistasenacero



📷 @mercadodeacerosmx

📘 @mercadodeaceros

☎ 4432281049

TU MEJOR ALIADO, PARA LOS
TRABAJOS MÁS DEMANDANTES



Mercado
de Aceros

*alta **calidad** y
entregas más
rápidas.*

Acero de alta calidad, conoce todos los productos y perfiles que ofrecemos.

Para mayor información comunícate:

☎ **4432281049**

Catálogo. Láminas y placas.

#especialistasenacero

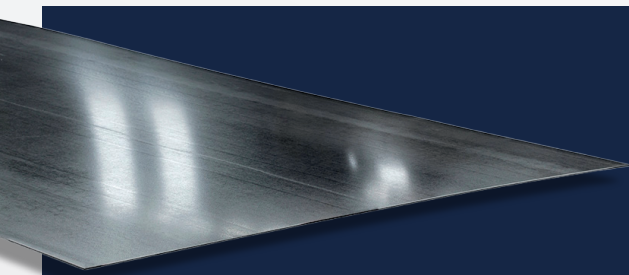


Lámina Negra Rolada en Caliente y Frío. Negra Decapada.

Norma SAE 1008/1010, ASTM A1011, A568

Calibre	Espesor	Espesor	Peso	0.914 X 1.829	0.914 X 2.438	0.914 X 3.048	1.219 X 2.438	1.219 X 3.048
No	mm	Pulg.	Kg/m2	3' X 6'	3' X 8'	3' X 10'	4' X 8'	4' X 10'
6	4.94	0.1943	39.681	66.337	88.45	110.567	118.122	147.653
8	4.18	0.1644	33.576	56.131	74.842	93.552	99.949	124.936
9	3.8	0.1495	30.523	51.028	68.038	85.047	90.861	113.576
10	3.42	0.1345	27.471	45.925	61.234	76.542	81.776	102.22
11	3.04	0.1196	24.42	40.824	54.432	68.04	72.963	90.867
12	2.66	0.1046	21.367	35.721	47.628	59.535	63.605	79.507
13	2.28	0.0897	18.315	30.618	40.824	51.03	54.52	68.15
14	1.9	0.0747	15.262	25.515	34.02	42.525	45.432	56.79
15	1.71	0.0673	13.736	22.963	30.617	38.271	40.889	51.112
16	1.52	0.0598	12.21	20.412	27.216	34.02	36.347	46.788
17	1.37	0.0538	10.98	18.37	24.49	30.61	32.65	40.82
18	1.21	0.0478	9.768	16.33	21.773	27.216	29.007	36.347
19	1.06	0.0418	8.547	14.288	19.051	23.814	25.443	31.803
20	0.91	0.0359	7.326	12.247	16.33	20.412	21.808	27.26
21	0.84	0.0329	6.713	11.22	14.96	18.71	19.95	24.94
22	0.76	0.0299	6.105	10.206	13.608	17.01	18.173	22.717
23	0.68	0.0269	5.492	9.18	12.24	15.3	16.32	20.41
24	0.61	0.0239	4.448	8.165	10.886	13.608	14.539	18.173
25	0.53	0.0209	4.272	7.144	9.52	11.9	12.7	15.87
26	0.46	0.0179	3.663	6.124	8.165	10.206	10.904	13.63
28	0.38	0.0149	3.052	5.103	6.804	8.505	9.085	11.356
30	0.3	0.012	2.442	4.082	5.443	6.804	7.269	9.087

© @mercadodeacerosmx

📌 @mercadodeaceros

☎ 4432281049

mercadodeaceros.com



Lámina Antiderrapante.

Norma ASTM A786

Calibre	Pulg.	mm.	kg/m2	3'X10'	4'X10'
14	0.0747	1.9	16.03	44.677	59.569
12	0.1046	2.66	22.43	62.514	83.352
1/8	0.125	3.17	26.8	74.694	99.592
10	0.1345	3.42	28.84	80.379	107.172
1/16	0.1875	4.76	40.21	112.068	149.425
1/4	0.25	6.4	53.61	149.415	199.221

Placa.

Norma ASTM A36, A572, A709, A283, A285, A285-C,

Pies	Dimensiones	3/16"	1/4"	5/16"	3/8"	1/2"	5/8"	3/4"
	Metros	4.8mm	6.4mm	7.9mm	9.5mm	12.7mm	15.9mm	19.1mm
3'x10'	0.91x3.05	106	142	177	213	284	355	426
4'x10'	1.22x3.05	142	189	237	284	379	474	569
4'x20'	1.22x6.10	284	379	474	569	759	948	1138
5'x10'	1.52x3.05	177	237	296	355	474	592	711
5'x20'	1.52x6.10	355	474	592	711	948	1185	1423
6'x20'	1.83x6.10	426	569	711	853	1138	1423	1707
8'x20'	2.44x6.10	569	759	948	1138	1518	1897	2276
10'x20'	3.04x6.10	711	948	1185	1423	1897	2371	2846

Pies	Dimensiones	7/8"	1"	1 1/8"	1 1/4"	1 1/2"	1 3/4"	2"
	Metros	22.2 mm	25.4 mm	28.5 mm	31.7 mm	38.1 mm	44.5 mm	50.8 mm
3'x10'	.914x3.05	498	569	640	711	853	996	1138
4'x10'	1.22x3.05	664	758	853	948	1138	1328	1517
5'x10'	1.52x3.05	830	948	1067	1185	1423	1660	1897
5'x20'	1.52x6.10	1660	1897	2134	2371	2846	3320	3794
6'x20'	1.83x6.10	1992	2276	2561	2846	3415	3984	4553
8'x20'	2.44x6.10	2656	3055	3415	3794	4554	5313	6071
10'x20'	3.04x6.10	3320	3794	4269	4743	5692	6641	7589

Catálogo. Lámina recubierta.

#especialistasenacero



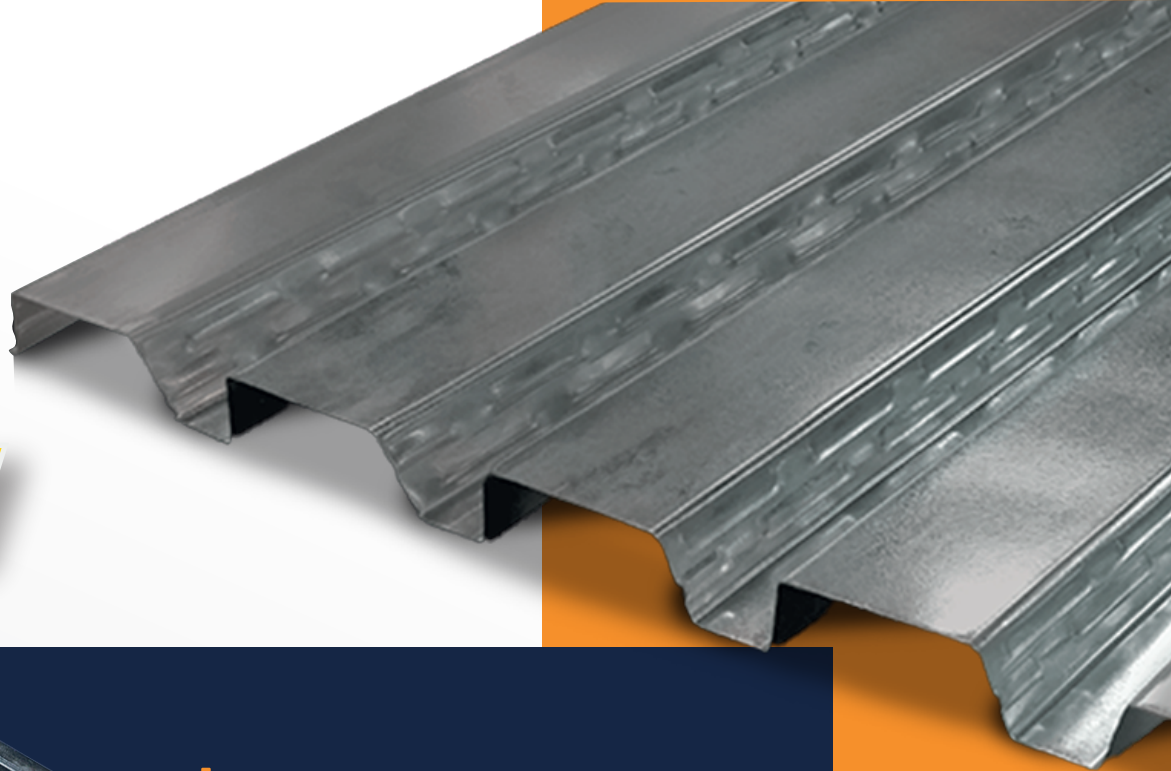
@mercadodeacerosmx

@mercadodeaceros

4432281049

mercadodeaceros.com





Losacero.

Norma ASTM A653, SS37

Calibre	Esp. Acero Base		Peso			Compresión Superior M+ C		Compresión Inferior M			Cortante Adm. Vay (Kg/ mto. ancho)	Ancho Efectivo Nominal
	mm	Pulg.	Kg/ml	Kg/m2	cm4/m	cm3/m	Kg-m	cm2/m	cm3/m	kg-m		
24	0.607	0.0239	5.8	6.04	51.07	13.01	203	51.07	13.75	214	1397	0.915
22	0.759	0.0299	7.6	8.31	67.48	18.01	281	67.03	18.82	293	2206	0.915
20	0.912	0.0359	9.06	9.9	88.46	23.14	361	83.46	24.08	375	3181	0.915
18	1.214	0.0478	11.96	13.07	111.32	32.76	511	111.32	34.13	532	4213	0.915

Calibre	Esp. Acero Base	Peso	Claro Maximo Sin Apuntalar		
			Simple	Doble	Triple
Esp De Diseño			m	m	m
Pulg.	cm	Kg/m2			
24 0.0239	5	195	1.77	2.38	2.41
	6	218	1.7	2.29	2.32
	8	264	1.59	2.15	2.17
	10	310	1.5	2.03	2.05
22 0.0299	12	356	1.42	1.93	1.95
	5	205	2.08	2.68	2.77
	6	229	2	2.58	2.66
	8	277	1.86	2.4	2.48
20 0.0359	10	325	1.8	2.26	2.33
	12	373	1.78	2.13	2.2
	5	206	2.42	3.05	3.15
	6	230	2.32	2.93	3.03
18 0.0478	8	278	2.16	2.74	2.83
	10	326	2.09	2.57	2.66
	12	374	2.06	2.44	2.52
	5	209	2.97	3.62	3.74
	6	233	2.85	3.48	3.6
	8	281	2.63	3.25	3.36
	10	329	2.56	3.06	3.16
	12	377	2.51	2.9	3

@mercadodeacerosmx

@mercadodeaceros

4432281049

mercadodeaceros.com



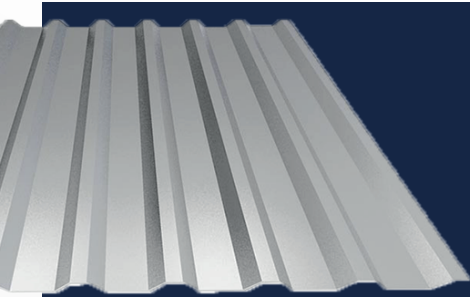


Lámina Acanalada.

Norma ASTM A653, SS37

Calibre	Espesor		Peso X Metro Lineal		Kg/m ²	Kg/m ²	Kg/m ²	Kg/m ²	Kg/m ²
	mm	Pulg.	91.5 cm 3' Ancho	122 cm 4' Ancho	3' R-72	4' R-101	3' 0-725	4' Rn 100/35	4' 0-100
10	3.454	0.136	24.78	33.04					
12	2.695	0.1061	19.33	25.77					
14	1.936	0.0762	13.87	18.5					
16	1.557	0.0613	11.16	14.88					
18	1.252	0.0493	8.97	11.96					
20	0.95	0.0374	6.8	9.07	9.44	8.99	9.52	8.78	9.52
22	0.798	0.0314	5.71	7.61	7.93	7.55	7.99	7.37	7.99
24	0.569	0.0224	4.07	5.42	5.65	5.38	5.69	5.25	5.69
26	0.493	0.0194	3.52	4.63	4.89	4.65	4.92	4.55	4.92
28	0.417	0.0164	2.97	3.96	4.13	3.93	4.16	3.84	4.16
30	0.343	0.0135	2.44	3.26	3.39	3.23	3.42	3.16	3.42
32	0.284	0.011	1.89	2.84	2.13		2.99		

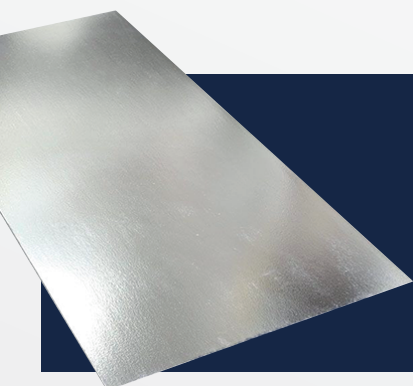


Lámina Galvanizada.

Norma ASTM A653, A924

Calibre	Peso por pie l.		1.83m	2.44m	3.05m	3.66m	2.44m	3.05m
	91.4 cm 3' ancho	121.9 cm 4' ancho	3'x 6'	3'x 8'	3'x 10'	3'x 12'	4'x 8'	4'x 10'
10	7.56	10.07	45.36	60.41	75.51	90.61	--	--
12	5.89	7.86	35.34	47.12	58.89	70.67	62.82	78.53
14	4.23	5.64	25.37	33.82	42.28	50.73	45.1	56.37
16	3.4	4.54	20.4	27.2	34	40.8	36.26	45.33
18	2.74	3.65	16.4	21.86	27.33	32.8	29.15	36.44
20	2.08	2.77	12.43	16.57	20.72	24.86	22.1	27.62
22	1.74	2.32	10.43	13.91	17.38	20.86	18.54	23.18
24	1.24	1.66	7.43	9.9	12.38	14.86	13.21	16.51
26	1.08	1.43	6.43	8.57	10.71	12.86	11.43	14.29
28	0.91	1.21	5.43	7.24	9.05	10.86	9.65	12.06
30	0.75	1	4.46	5.95	7.44	8.92	7.93	9.91

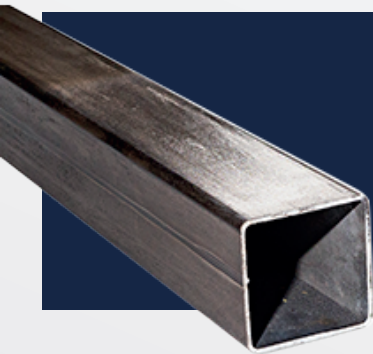


**Mercado
de Aceros**

Brindar calidad a nuestros clientes a través de la innovación, la mejora continua y el desarrollo humano, es nuestro compromiso. Mercado de Aceros, contribuyendo al crecimiento de México y su gente.

Catálogo. Perfiles tubulares.

#especialistasenacero



Perfil tubular cuadrado.

Norma C.Comercial

Lorem ipsum dolor sit amet, consectetur adipiscing elit, sed diam nonummy nibh euismod tincidunt ut laoreet dolore magna aliquam erat volutpat. Ut wisi enim ad minim veniam, quis nostrud exerci tation ullamcorper suscipit lobortis nisl ut aliquip ex ea commodo consequat. Duis autem vel eum iriure dolor in hendrerit in vulputate velit esse molestie consequat, vel illum dolore eu feugiat nulla facilisis at vero eros et accumsan et iusto odio dignissim qui blandit praesent



© @mercadodeacerosmx

Facebook @mercadodeaceros

© 4432281049

mercadodeaceros.com



05

Tubería cuadrada							
Descripción	Dim. Pulg.	Calibre (nominal)	Espesor (pulgada)	Inventario	Longitud (metros)	Piezas x paquete	Kilogramo x metro
C-050	0.500"	22	0.0299	*	6	231	0.28
		20	0.0359	N/GV	6	231	0.34
		18	0.0478	N	6	231	0.44
C-062	0.625"	16	0.0598	*	6	182	0.53
		20	0.0359	*	6	252	0.43
		18	0.0478	*	6	252	0.56
C-075	0.750"	16	0.0598	*	6	252	0.68
		22	0.0299	*	6	120	0.44
		20	0.0359	N/PR/GV	6	120	0.52
C-087	0.875"	18	0.0478	N/PR/GV	6	120	0.68
		16	0.0598	*	6	120	0.84
		14	0.0747	N	6	120	1.02
C-100	1.000"	20	0.0359	*	6	112	0.61
		14	0.0747	*	6	112	1.21
		20	0.0359	N/PR/GV	6	100	0.7
C-125	1.250"	18	0.0478	N/PR/GV	6	100	0.92
		16	0.0598	N / GN	6	100	1.14
		14	0.0747	N / GN	6	100	1.4
C-150	1.500"	13	0.0897	N	6	100	1.65
		12	0.1046	N	6	80	1.9
		11	0.1196	N	6	80	1.94
C-175	1.750"	10	0.1345	N	6	80	2.12
		20	0.0359	PR/GV	6	81	0.88
		18	0.0478	N/PR/GV	6	81	1.16
C-200	2.000"	16	0.0598	N / GN	6	81	1.44
		14	0.0747	N / GN	6	81	1.78
		12	0.1046	N	6	63	2.42
C-225	2.250"	11	0.1196	*	6	63	2.55
		10	0.1345	*	6	63	2.8
		20	0.0359	PR/GV	6	49	1.06
C-250	2.500"	18	0.0478	N/PR/GV	6	49	1.4
		16	0.0598	N / GN	6	49	1.74
		14	0.0747	N / GN	6	49	2.15
C-300	3.000"	12	0.1046	N	6	49	2.95
		11	0.1196	N	6	49	3.15
		10	0.1345	N	6	49	3.48
C-350	3.500"	9	0.1495	*	6	49	3.79
		16	0.0598	*	6	60	2.05
		14	0.0747	GN	6	60	2.53
C-400	4.000"	11	0.1196	*	6	60	3.76
		20	0.0359	*	6	50	1.43
		18	0.0478	PR / GV	6	50	1.89
C-450	4.500"	16	0.0598	N / GN	6	50	2.35
		14	0.0747	N / GN	6	50	2.91

Tubería cuadrada							
Descripción	Dim. Pulg.	Calibre (nominal)	Espesor (pulgada)	Inventario	Longitud (metros)	Piezas x paquete	Kilogramo x metro
C-200	2.000"	12	0.1046	N	6	40	4.01
		11	0.1196	N	6	40	4.36
		10	0.1345	N	6	40	4.84
		9	0.1495	N	6.1	40	5.31
C-225	2.250"	3/16	0.188	N	6.1	40	6.42
		1/4	0.25	N	6.1	40	8.04
		16	0.0598	*	6	50	2.65
		14	0.0747	*	6	50	3.29
C-250	2.500"	16	0.0598	*	6	36	2.95
		14	0.0747	N / GN	6	36	3.67
		13	0.0897	*	6	36	4.38
		12	0.1046	N	6	27	5.07
C-300	3.000"	11	0.1196	N	6	27	5.57
		10	0.1345	N	6	27	6.2
		9	0.1495	*	6	27	6.82
		3/16	0.188	N	6.1	27	8.34
C-350	3.500"	1/4	0.25	*	6.1	27	10.57
		14	0.0747	N	6	35	4.42
		13	0.0897	*	6	35	5.28
		12	0.1046	*	6	21	6.13
C-400	4.000"	11	0.1196	N	6	21	6.78
		10	0.1345	*	6	21	7.56
		9	0.1495	N	6	21	8.33
		3/16	0.188	N	6.1	21	10.21
C-450	4.500"	1/4	0.25	N	6.1	21	13.1
		14	0.0747	*	6	18	5.18
		11	0.1196	N	6	18	7.99
		9	0.1495	*	6	18	9.85
C-500	5.000"	3/16	0.188	N	6.1	18	12.14
		1/4	0.25	N	6.1	18	15.63
		14	0.0747	N	6	20	5.93
		11	0.1196	N	6	15	9.21
C-600	6.000"	10	0.1345	*	6	15	10.29
		9	0.1495	N	6	15	11.36
		3/16	0.188	N	6.1	15	14.01
		1/4	0.25	N	6.1	15	18.16
C-500	5.000"	11	0.1196	*	6	12	10.42
		3/16	0.188	*	6.1	12	15.90
		1/4	0.25	*	6.1	12	20.69
		3/16	0.188	*	6.1	12	17.80
C-600	6.000"	1/4	0.25	*	6.1	12	23.22
		3/16	0.188	N	12.2	9	21.65
		1/4	0.25	N	12.2	9	21.60

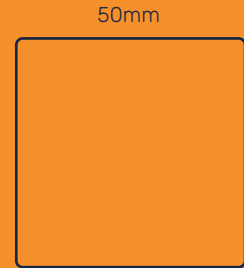
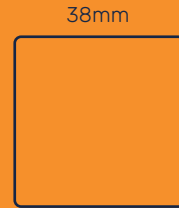
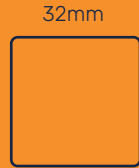
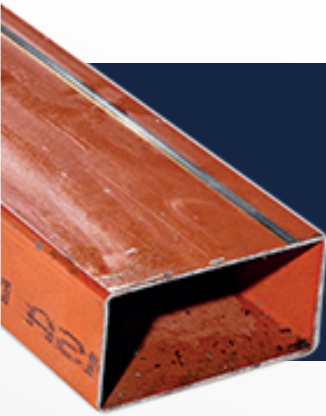


Figura	Calibre (nominal)	Perfiles		Longitud (metros)	Piezas x paquete	Kilogramos x metro
		Espesor (Pulgada)	Inventario			
	20	0.0359	PR / GV	6	450	0.18
	18	0.0478	PR	6	450	0.25
	20	0.0359	PR	6	300	0.23
	20	0.0359	PR	6	250	0.39
	20	0.0359	*	6	72	1.46
	20	0.0359	PR / GV	5.5	96	1.03
	18	0.0478	PR / GV	5.5	96	1.41
	20	0.0359	PR	5.5	96	1.17
	20	0.0359	PR	5.5	42	1.56
	18	0.0478	*	5.5	42	2.12
	20	0.0359	PR	5.5	42	1.69
	18	0.0478	*	6	42	2.31
	18	0.0478	*	5.5	54	2.68
	18	0.0478	PR / GV	6	72	1.24
	16	0.0598	PR	6	30	2.45
	14	0.0747	PR / GN	6	32	3.06
	20	0.0359	PR / GV	6	90	1.08
	18	0.0478	PR	6	90	1.47



Perfil tubular rectangular.

Norma C.Comercial

Descripción	Dim. Pulg.	Calibre (nominal)	Espesor (pulgada)	Inventario	Longitud (metros)	Piezas x paquete	Kilogramo x metro
R-100	1.00x0.50"	20	0.0359	N	6	120	0.52
		18	0.0478	N/PR/GV	6	120	0.68
		16	0.0598	*	6	120	0.84
		14	0.0747	N	6	120	1.02
R-125	1.25x0.75"	20	0.0359	PR / GV	6	99	0.7
		18	0.0478	PR	6	99	0.92
		16	0.0598	*	6	99	1.14
		14	0.0747	N	6	99	1.4
R-155	1.50x0.50"	20	0.0359	*	6.03	98	0.7
		18	0.0478	PR	6.03	98	0.92
		14	0.0747	*	6	98	1.4
		16	0.0598	*	6	98	1.29
R-150	1.50x0.75"	14	0.0747	*	6	98	1.59
		11	0.1196	*	6	98	2.25
		20	0.0359	*	6	84	0.88
		18	0.0478	PR	6	84	1.16
R-151	1.50x1.00"	16	0.0598	*	6	100	1.44
		14	0.0747	*	6	84	1.78
		11	0.1196	*	6	63	2.55
		20	0.0359	PR / GV	6	84	0.88
R-175	1.75x0.75"	18	0.0478	PR	6	84	1.16
		20	0.0359	PR / GV	6	50	1.06
		18	0.0478	N/PR/GV	6	50	1.4
		16	0.0598	N	6	50	1.74
R-200	2.00x1.00"	14	0.0747	N / GN	6	50	2.15
		12	0.1046	*	6	50	2.95
		11	0.1196	*	6	50	3.15
		20	0.0359	PR / GV	6	55	1.06
R-225	2.25x0.75"	18	0.0478	PR	6	55	1.4
		20	0.0359	PR / GV	6	54	1.34
		18	0.0478	PR	6	54	1.77
		16	0.0598	*	6	54	2.2
R-249	2.50x1.25"	14	0.0747	*	6	54	2.72
		12	0.1046	*	6	54	3.75
		18	0.0478	*	6	48	1.89
		14	0.0747	N	6	48	2.91
R-250	2.50x1.50"	12	0.1046	*	6	40	4.01
		11	0.1196	*	6	40	4.36
		12	0.1046	*	6	40	3.75
		11	0.1196	*	6	40	4.06
R-275	2.75x1.00"	14	0.0747	*	6	48	2.72
		18	0.0478	*	6	48	1.89
		16	0.0598	*	6	48	2.35
		14	0.0747	*	6	48	2.91
R-301	3.00x1.00"	11	0.1196	*	6	48	4.36
		10	0.1345	*	6	48	4.84
		16	0.0598	*	6	48	2.35
		14	0.0747	*	6	48	2.91
R-300	3.00x1.50"	10	0.1345	*	6	48	4.84
		11	0.1196	*	6	48	4.36
		22	0.0299	GV	6	49	1.34
		16	0.0598	*	6	48	2.35

Descripción	Dim. Pulg.	Calibre (nominal)	Espesor (pulgada)	Inventario	Longitud (metros)	Piezas x paquete	Kilogramo x metro
R-300	3.00x1.50"	20	0.0359	PR / GV	6	49	1.61
		18	0.0478	N/PR/GV	6	49	2.13
		16	0.0598	*	6	49	2.65
		14	0.0747	N / GN	6	49	3.29
R-302	3.00x2.00"	16	0.0598	*	6	28	2.95
		14	0.0747	N	6	35	3.67
		12	0.1046	*	6	28	5.07
		11	0.1196	N	6	28	5.57
R-400	4.00x1.50"	10	0.1345	N	6	28	6.2
		9	0.1495	*	6	28	6.82
		3/16	0.188	N	6.1	28	8.52
		1/4	0.25	*	6.1	28	10.57
R-402	4.00x2.00"	20	0.0359	PR / GV	6	35	1.97
		18	0.0478	PR / GV	6	35	2.61
		16	0.0598	*	6	35	3.26
		14	0.0747	N	6	35	4.04
R-403	4.00x3.00"	14	0.0747	N	6	20	4.42
		11	0.1196	N	6	20	6.78
		10	0.1345	*	6	20	7.56
		9	0.1495	N	6	20	8.33
R-502	5.00x2.00"	3/16	0.188	N	6.1	20	10.21
		1/4	0.25	*	6.1	15	13.1
		11	0.1196	*	6	20	5.18
		3/16	0.188	N	6	15	7.99
R-503	5.00x3.00"	9	0.1495	N	6	15	9.85
		3/16	0.188	N	6.1	15	12.11
		1/4	0.25	N	6.1	15	15.63
		11	0.1196	*	6	20	7.99
R-602	6.00x2.00"	3/16	0.188	*	6.1	20	12.14
		1/4	0.25	*	6.1	20	15.63
		11	0.1196	*	6	16	9.21
		10	0.1345	*	6	16	10.29
R-603	6.00x3.00"	3/16	0.188	*	6.1	16	14.01
		1/4	0.25	*	6.1	16	18.16
		11	0.1196	*	6	16	9.21
		16	0.188	*	6.1	15	14.03
R-604	6.00x4.00"	1/4	0.25	*	6.1	15	18.16
		11	0.1196	N	6	12	11.63
		9	0.1495	*	6.1	12	14.38
		3/16	0.188	*	6.1	12	17.80
R-804	8.00x4.00"	1/4	0.25	N	6.1	12	23.22
		3/16	0.188	*	12.2	9	21.60
		1/4	0.25	*	12.2	9	28.27

Tubería mecánica.

Norma ASTM A513

Medida	Ced. No.	Diámetro Nominal pulg	Diámetro Exterior pulg	Espesor pulg	Peso Teórico peso por pieza
1/2	30	1/2	0.845/0.84	0.074	5.7
1/2	40	1/2	0.845/0.84	0.104	8.58
3/4	30	3/4	1.05	0.074	7.66
3/4	40	3/4	1.05	0.104	10.34
1	30	1	1.315	0.074	9.62
1	40	1	1.315	0.135	16.192
1 1/4	30	1 1/4	1.66	0.089	13.44
1 1/4	40	1 1/4	1.66	0.135	20.86
1 1/2	30	1 1/2	1.875	0.089	16.33
1 1/2	40	1 1/2	1.9	0.135	24.64
2	30	2	2.375	0.104	24.46
2	40	2	2.375	0.149	33.85
2 1/2	30	2 1/2	2.875	0.104	28.92
2 1/2	40	2 1/2	2.875	0.203	54.6
3	30	3	3.5	0.12	40.32
3	40	3	3.5	0.216/0.2242	71.518
4	30	4	4.5	0.12	52.038
4	40	4	4.5	0.2242	95.062
6	30	6	6.625	0.187	119.34
6	40	6	6.625	0.28	176.04

Tubería industrial.

Norma ASTM A513

Diámetro		Calibre	kg por metro	kg por pieza
Pulgadas	milímetros			
5/8	15.9	16	0.6	3.6
5/8	15.9	18	0.5	3
5/8	15.9	20	0.4	2.4
3/4	19	16	0.7	4.2
3/4	19	18	0.6	3.6
3/4	19	20	0.4	2.4
7/8	22.7	16	0.9	5.4
7/8	22.7	18	0.7	4.2
7/8	22.7	20	0.5	3
7/8	25.4	14	1.2	7.2
1	25.4	16	1	5.7
1	25.4	18	0.8	4.8
1	25.4	20	0.6	3.6
1 1/4	31.8	14	1.5	9
1 1/4	31.8	16	1.2	7.2
1 1/4	31.8	18	1	6
1 1/4	31.8	20	0.7	4.4
1 1/2	38.1	14	1.8	10.8
1 1/2	44.5	16	1.5	9
1 1/2	44.5	18	1.2	7.2
1 1/2	44.5	20	0.9	5.4
1 3/4	44.5	14	2.1	12.6
1 3/4	50.8	16	1.7	10.2
1 3/4	50.8	18	1.4	8.4
1 3/4	50.8	20	1	6
2	50.8	14	2.4	14.4
2	63.5	16	1.9	11.6
2	63.5	18	1.6	9.6
2	63.5	20	1.2	7.2
2 1/6	63.5	14	3.1	18.6
2 1/6	76.5	16	2.4	14.4
2 1/6	76.5	18	1.9	11.6
2 1/6	76.5	20	1.5	8.8
3	76.5	14	3.7	22.2
3	76.5	16	2.9	17.4
3	76.5	18	2.3	13.8
4	101	16	3.8	22.5

@mercadodeacerosmx

@mercadodeaceros

4432281049

mercadodeaceros.com

MA Mercado de Aceros

09



Mercado
de Aceros

CALIDAD EN ACERO.

#especialistasenacero



© @mercadodeacerosmx

Facebook @mercadodeaceros

Phone 4432281049

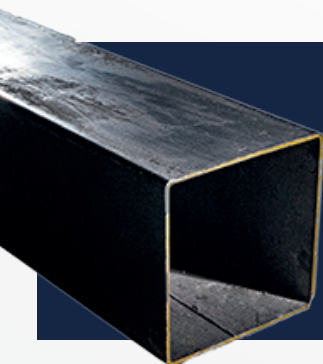
mercadodeaceros.com



Catálogo.

Perfiles estructurales.

#especialistasenacero



HSS Cuadrado

Norma ASTM A500 GR B

Dimensiones Nominales		Peso	Espesor real	b/t	h/t	Área	I	S	r	Z	Torsión	Área de sup. Por ML		
H	B	Espesor									J	C		
in	in	in	kg/m	in		cm ²	cm ⁴	cm ³	cm	cm ³	cm ⁴	cm ³	mt ²	
4	4	1/2	32.2	0.47	5.6	5.6	38.84	495.32	97.18	3.56	120.61	874.09	183.54	0.37
		3/8	25.71	0.349	8.47	8.47	30.84	424.56	83.9	3.71	101.93	728.4	149.61	0.37
		5/16	22.07	0.29	10.8	10.8	26.39	379.6	74.73	3.78	89.8	636.83	129.46	0.38
5	5	1/2	42.32	0.465	7.75	7.75	50.84	1078.04	170.43	4.6	208.12	1856.39	306.44	0.47
		3/8	33.2	0.349	11.3	11.3	39.87	903.22	141.91	4.75	170.43	1505.6	244.17	0.48
		5/16	28.4	0.291	14.2	14.2	33.94	790.84	124.54	4.83	148.14	1294.48	209.75	0.48
6	6	3/16	18	0.176	25.9	25.9	21.1	522	82.2	4.97	96.1	7810	132	0.49
		5/8	62.96	0.581	7.32	7.32	75.48	2289.27	299.88	5.51	371.99	954.64	547.33	0.56
		1/2	52.46	0.465	9.9	9.9	62.84	2006.24	263.83	5.64	319.55	3375.64	460.48	0.57
8	8	3/8	40.9	0.349	14.2	14.2	48.84	1639.95	214.67	5.79	255.64	2688.86	362.15	0.58
		5/16	34.74	0.291	17.6	17.6	41.42	1427.67	186.81	5.87	221.23	2305.92	309.72	0.59
		1/4	28.31	0.233	22.8	22.8	33.68	1190.42	156	5.94	181.9	1893.85	252.36	0.59
10	10	3/16	21.8	0.214	31.6	31.6	25.5	923	121	6.01	141	1456.81	192	0.59
		5/8	88.3	0.58	10.8	10.8	105.81	6076.98	598.13	7.59	724.31	10156.05	1035.66	0.76
		1/2	72.71	0.465	14.2	14.2	87.1	5202.89	509.64	7.72	607.96	8491.12	858.68	0.77
12	12	3/8	56.1	0.349	19.9	19.9	67.1	4141.5	408.04	7.87	478.5	6659.7	666.95	0.78
		5/16	47.39	0.291	24.5	24.5	56.39	3558.78	350.68	7.95	409.68	5660.75	565.35	0.79
		1/4	38.43	0.233	31.4	31.4	45.68	2934.43	288.41	8.03	334.3	4620.17	458.84	0.79
14	14	3/16	29.4	0.174	43.2	43.2	34.5	2260	222	8.09	256	3521.32	347	0.8
		5/8	113.62	0.581	14.2	14.2	135.48	12653.44	996.33	9.65	1191.34	20728.32	1671.48	0.97
		1/2	92.97	0.465	18.5	18.5	110.97	10655.52	839.02	9.8	989.78	17148.73	1379.79	0.98
16	16	3/8	71.3	0.349	25.7	25.7	85.16	8407.87	660.4	9.96	770.19	13277.78	1061.88	0.98
		5/16	60.06	0.29	31.4	31.4	71.61	7159.18	563.72	10.01	653.84	11238.25	896.37	0.99
		1/4	48.57	0.23	40	40	57.68	5868.86	462.12	10.08	532.58	9157.09	725.95	1
18	18	3/16	37.1	0.17	54.7	54.7	43.4	4480	353	10.2	405	6951.06	548	1
		5/8	138.94	0.58	17.6	17.6	165.81	22809.48	1497.78	11.73	1769.8	36878.1	2474.45	1.17
		1/8	113.23	0.47	22.8	22.8	134.84	19021.78	1248.69	11.89	1461.73	30301.65	2015.61	1.18
20	20	3/8	86.48	0.35	31.4	31.4	102.58	14859.46	975.03	12.01	1130.71	23350.58	1548.58	1.19
		5/16	72.73	0.29	38.3	38.3	86.45	12653.44	829.19	12.09	957	19687.75	1304.41	1.19
		1/4	58.68	0.23	48.6	48.6	69.68	10322.54	676.79	12.17	776.75	15941.66	1053.69	1.2
24	24	5/8	164.23	0.58	21.1	21.1	196	374000	2100	13.8	2480	55900	3430	1.37
		1/2	133.5	0.47	27.1	27.1	159	30900	1740	14	2030	46300	2780	1.38
		3/8	101.4	0.35	37	37	121	24100	1360	14.1	1570	36100	2140	1.39
30	30	5/16	85	0.29	45.1	45.1	102	20400	1150	14.2	1320	30600	1790	1.4
		1/2	153.7	0.47	31.4	31.4	183	46900	2310	16	2680	70300	3670	1.59
		3/8	116.6	0.35	42.7	42.7	139	36500	1790	16.2	2070	54700	2810	1.6
36	36	5/16	97.6	0.29	51.9	51.9	117	30800	1510	16.2	1740	46100	2350	1.6

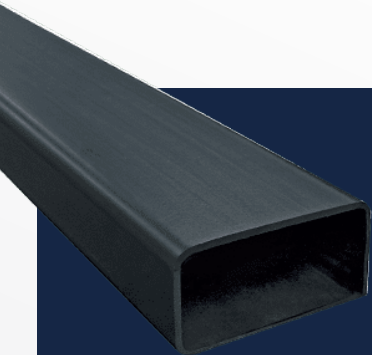
© @mercadodeacerosmx

f @mercadodeaceros

☎ 4432281049

mercadodeaceros.com

MA Mercado de Aceros



HSS Rectangular

Norma ASTM A500 GR B

Dimensiones Nominales		Peso	Espesor real	b/t	h/t	Área		Eje X-X					Eje Y-Y			Torsión	Área de sup. Por ML
H	B	Espesor						I	S	r	Z	I	S	r	Z	C	
in	in	in	kg/m	in		cm ²	cm ⁴	cm ³	cm	cm ³	cm ⁴	cm ³	cm	cm ³	cm ³	mt ²	
5	3	1/4	18.3	0.233	9.9	18.5	21.7	445	70.1	4.53	88	200	52.4	3.03	61.6	100	0.39
		3/16	14.1	0.174	14.3	25.9	16.6	354	55.7	4.61	68.7	160	41.9	3.1	48.3	77.1	0.39
6	4	1/2	42.27	0.465	5.6	9.9	50.84	1411.02	185.1	5.26	234.34	736.73	145.19	3.81	175.34	291.69	0.47
		3/8	33.34	0.349	8.47	14.2	39.87	1177.93	154.37	5.44	191.73	620.18	122.08	3.94	143.55	232.7	0.48
		5/16	28.3	0.277	10.7	17.6	34	1030	136	5.51	169	548	108	4.01	127	201	0.48
		1/4	23.22	0.233	14.2	22.8	27.68	865.76	113.73	5.59	138.47	462.02	90.78	4.09	104.55	165.51	0.49
8	3	3/16	18	0.176	20.1	31.6	21.1	679	89.1	5.67	108	363	71.5	4.15	81.6	126	0.49
		1/8	13.5	0.132	22.4	64.7	16.2	818	80.5	7.11	102	177	46.6	3.31	51.1	87.8	0.55
8	4	1/4	26	0.233	9.9	31.4	30.7	1470	145	6.93	188	311	81.6	3.18	93.2	163	0.54
		3/16	19.9	0.195	14.3	43.2	23.3	1150	113	7.03	145	246	64.6	3.25	72.3	125	0.54
		1/2	52.4	0.465	5.6	14.2	62.84	2984.38	293.33	6.88	378.54	982.31	193.37	3.96	227.78	399.84	0.57
		3/8	40.93	0.349	8.47	19.9	48.84	2439.12	240.89	7.06	304.8	815.81	160.27	4.09	185.17	316.27	0.58
8	6	1/4	28.28	0.233	14.2	31.4	33.68	1768.98	173.7	7.24	216.31	599.37	117.99	4.22	133.23	222.86	0.59
		3/16	21.8	0.214	20.1	43.2	25.5	1370	135	7.33	167	469	92.3	4.28	103	170	0.59
		1/2	62.52	0.465	9.9	14.2	74.84	4083.23	401.48	7.39	493.25	2601.45	340.85	5.89	403.12	629.26	0.67
		3/8	48.53	0.349	14.2	19.9	57.87	3292.39	324.46	7.54	391.65	2106.13	276.94	6.02	321.19	491.61	0.68
10	4	1/4	33.34	0.233	14.2	40	39.68	3100.92	244.17	8.84	309.72	736.73	145.03	4.32	161.9	280.22	0.69
		3/16	25.6	0.251	20.1	54.7	30	2390	189	8.93	238	574	113	4.37	125	213	0.7
		1/2	72.79	0.465	9.9	18.5	87.1	7117.56	562.08	9.07	699.73	3192.5	419.51	6.07	488.33	798.05	0.77
		3/8	56.12	0.349	14.2	25.7	67.1	5702.37	447.37	9.22	550.61	2568.15	337.57	6.2	385.1	621.07	0.78
10	6	1/4	38.4	0.233	22.8	40	45.68	4024.96	316.27	9.37	383.46	1831.42	240.89	6.32	270.39	427.7	0.79
		3/16	29.4	0.289	31.6	54.7	34.5	3090	243	9.47	293	1410	185	6.4	207	325	0.8
		1/2	82.91	0.435	14.2	18.5	98.71	8907.35	699.73	9.47	843.93	6285.09	617.79	7.98	722.67	1088.1	0.87
		3/8	63.71	0.349	19.9	25.7	76.13	7034.31	553.88	9.63	660.4	4994.78	491.61	8.1	566.99	840.66	0.88
16	6	1/4	43.46	0.233	31.4	40	51.68	4953.15	390.01	9.78	458.84	3521.32	345.77	8.26	393.29	576.82	0.89
		1/2	82.91	0.465	9.9	22.8	98.71	11279.87	740.7	10.69	934.06	3787.71	496.53	6.2	571.91	966.84	0.87
		3/8	63.71	0.349	14.2	31.4	76.13	8948.98	586.66	10.87	730.86	3034.33	398.21	6.32	450.64	750.53	0.88
		1/4	43.46	0.233	22.8	48.6	51.68	6285.09	412.95	11.02	508	2156.08	283.5	6.45	314.64	516.19	0.89
12	8	1/2	93.03	0.465	14.2	22.8	110.97	13860.51	909.48	11.18	1111.04	7367.3	727.59	8.15	839.02	1317.52	0.98
		3/8	71.3	0.349	19.9	31.4	85.16	10905.26	716.11	11.35	865.24	5827.24	575.19	8.31	653.84	1016	0.98
		1/4	48.53	0.233	31.4	48.6	57.68	7617.04	501.44	11.51	598.13	4104.04	403.12	8.43	453.92	696.45	1



IPR

Norma ASTM A36, A572 GR50, A992

Medida	Peso lb/ft	kg/m	Área A in 2	Peralte D in	Patón B in	Tf in	Alma Tw in
W6 (6 X 4)	8.5	12.6	2.52	5.83	3.94	0.18	0.17
W6 (6 X 4)	9	13.39	2.68	5.9	3.94	0.215	0.17
W6 (6 X 4)	12	17.86	3.55	6.03	4	0.28	0.23
W6 (6 X 4)	16	23.81	4.74	6.28	4.03	0.405	0.26
W6 (6 X 4)	15	22.35	4.43	5.99	5.99	0.26	0.23
W6 (6 X 6)	20	29.8	5.87	6.2	6.02	0.37	0.26
W6 (6 X 6)	25	37.2	7.34	6.38	6.08	0.46	0.32
W8 (8 X 4)	10	14.88	2.96	7.89	3.94	0.205	0.17
W8 (8 X 4)	13	19.34	3.84	7.99	4	0.255	0.23
W8 (8 X 4)	15	22.32	4.44	8.11	4.02	0.315	0.245
W8 (8 X 5 1/4)	18	26.78	5.26	8.14	5.25	0.33	0.23
W8 (8 X 5 1/4)	21	31.25	6.16	8.28	5.27	0.4	0.25
W8 (8 X 6 1/2)	24	35.72	7.08	7.93	6.5	0.4	0.25
W8 (8 X 8)	31	46.19	9.13	8	7.99	0.435	0.285
W8 (8 X 8)	35	52.2	10.3	8.12	8.02	0.495	0.31
W8 (8 X 8)	40	59.58	11.7	8.25	8.07	0.56	0.36
W8 (8 X 8)	48	71.4	14.1	8.5	8.11	0.69	0.4
W8 (8 X 8)	58	86.3	17.1	8.75	8.22	0.81	0.51
W8 (8 X 8)	67	99.79	19.7	9.02	8.28	0.935	0.57
W10 (10 X 4)	12	17.86	3.54	9.87	3.96	0.21	0.19
W10 (10 X 4)	15	22.32	4.41	9.99	4	0.27	0.23
W10 (10 X 4)	17	25.3	4.99	10.11	4.01	0.33	0.24
W10 (10 X 4)	19	28.27	5.62	10.24	4.02	0.395	0.25
W10 (10 X 5 3/4)	22	32.74	6.49	10.17	5.75	0.36	0.24
W10 (10 X 5 3/4)	26	38.69	7.61	10.33	5.77	0.44	0.26
W10 (10 X 5 3/4)	30	44.64	8.84	10.47	5.81	0.51	0.3
W10 (10 X 5 3/4)	33	49.1	9.71	9.73	7.96	0.435	0.29
W10 (10 X 8)	39	58.1	11.5	9.92	7.99	0.53	0.315
W10 (10 X 8)	45	67.02	13.3	10.1	8.02	0.62	0.35
W10 (10 X 10)	49	73	14.4	9.98	10	0.56	0.34
W10 (10 X 10)	54	80.5	15.8	10.09	10.03	0.615	0.37
W10 (10 X 10)	60	89.3	17.6	10.22	10.08	0.68	0.42
W12 (12 X 4)	14	20.83	4.16	11.91	3.97	0.225	0.2
W12 (12 X 4)	16	23.81	4.71	11.99	3.99	0.265	0.22
W12 (12 X 4)	19	28.27	5.57	12.16	4.01	0.35	0.235
W12 (12 X 4)	22	32.74	6.48	12.31	4.03	0.425	0.26
W12 (12 X 6 1/2)	26	38.73	7.65	12.22	6.49	0.38	0.23
W12 (12 X 6 1/2)	30	44.64	8.79	12.34	6.52	0.44	0.26
W12 (12 X 6 1/2)	35	52.08	10.3	12.5	6.56	0.52	0.3
W12 (12 X 8)	40	59.52	11.8	11.94	8.01	0.515	0.295
W12 (12 X 8)	45	66.96	13.2	12.06	8.05	0.575	0.335
W12 (12 X 8)	50	74.4	14.7	12.19	8.08	0.64	0.37
W12 (12 X 10)	53	79	15.6	12.06	10	0.575	0.345
W12 (12 X 10)	58	86.39	17	12.19	10.01	0.64	0.36
W12 (12 X 12)	65	96.85	19.1	12.12	12	0.605	0.39
W12 (12 X 12)	72	107	21.1	12.25	12.04	0.67	0.43
W12 (12 X 12)	79	118	23.2	12.38	12.08	0.74	0.47
W12 (12 X 12)	87	129	25.6	12.53	12.13	0.81	0.52
W12 (12 X 12)	96	143	28.2	12.71	12.16	0.9	0.55

Medida	Peso lb/ft	kg/m	Área A in 2	Peralte D in	Patón B in	Tf in	Alma Tw in
W14 (14 X 5)	22	32.76	6.49	13.74	5	0.34	0.23
W14 (14 X 5)	26	38.72	7.69	13.91	5.03	0.42	0.26
W14 (14 X 6 3/4)	30	44.64	8.85	13.84	6.73	0.385	0.27
W14 (14 X 6 3/4)	34	50.59	10	13.98	6.75	0.455	0.285
W14 (14 X 6 3/4)	38	56.54	11.2	14.1	6.77	0.515	0.31
W14 (14X8)	43	63.98	12.6	13.66	8	0.53	0.305
W14 (14X8)	48	71.42	14.1	13.79	8.03	0.595	0.34
W14 (14X8)	53	78.68	15.6	13.92	8.06	0.66	0.37
W14 (14X10)	61	90.8	17.9	13.89	10	0.65	0.38
W14 (14X10)	68	101	20	14.04	10.04	0.72	0.42
W14 (14X10)	74	110.22	21.8	14.17	10.07	0.785	0.45
W14 (14X10)	82	122	24.1	14.31	10.13	0.86	0.51
W14 (14X14 1/2)	90	133.9	26.5	14.02	14.52	0.71	0.44
W14 (14X14 1/2)	99	148	29.1	14.16	14.57	0.78	0.485
W14 (14X14 1/2)	109	162.2	32	14.32	14.61	0.86	0.53
W14 (14X14 1/2)	120	178.6	35.3	14.48	14.67	0.94	0.59
W14 (14X14 1/2)	132	196.4	38.8	14.66	14.73	1.03	0.65
W16 (16X5 1/2)	26	38.7	7.68	15.69	5.5	0.35	0.25
W16 (16X5 1/2)	31	46.14	9.12	15.88	5.53	0.44	0.28
W16 (16X7)	36	53.57	10.6	15.86	6.99	0.43	0.295
W16 (16X7)	40	59.52	11.8	16.01	7	0.505	0.305
W16 (16X7)	45	67.02	13.3	16.13	7.04	0.565	0.345
W16 (16X7)	50	74.4	14.7	16.26	7.07	0.63	0.38
W16 (16X7)	57	84.82	16.8	16.43	7.12	0.715	0.43
W16 (16X10 1/4)	67	99.73	19.7	16.33	10.24	0.67	0.4
W16 (16X10 1/4)	77	114.69	22.6	16.52	10.3	0.76	0.455
W16 (16X10 1/4)	89	132.56	26.2	16.75	10.37	0.875	0.525
W18 (18X6)	35	52.1	10.3	17.7	6	0.43	0.3
W18 (18X6)	40	59.54	11.8	17.9	6.02	0.53	0.32
W18 (18X6)	46	68.08	13.5	18.06	6.06	0.61	0.36
W18 (18 X 7 1/2)	50	74.4	14.7	17.99	7.5	0.57	0.355
W18 (18 X 7 1/2)	55	81.84	16.2	18.11	7.53	0.63	0.39
W18 (18 X 7 1/2)	60	89.28	17.6	18.24	7.56	0.695	0.415
W18 (18 X 7 1/2)	65	96.72	19.1	18.35	7.59	0.75	0.45
W18 (18 X 7 1/2)	71	105.65	20.8	18.47	7.64	0.81	0.495
W18 (18X11)	76	113.2	22.3	18.21	11.04	0.68	0.425
W18 (18X11)	86	128.09	25.3	18.39	11.09	0.77	0.48
W18 (18X11)	97	144.48	28.5	18.59	11.14	0.87	0.535
W18 (18X11)	106	157.88	31.1	18.73	11.2	0.94	0.59
W18 (18X11)	119	177.25	35.1	18.97	11.27	1.06	0.655
W18 (18X11)	130	193	38.2	19.25	11.16	1.2	0.67
W18 (18X11)	143	213	42.1	19.49	11.22	1.32	0.73
W21 (21X6 1/2)	44	65.5	13	20.66	6.5	0.45	0.35
W21 (21X6 1/2)	50	74.4	14.7	20.83	6.53	0.54	0.38
W21 (21X6 1/2)	57	84.9	16.7	21.06	6.56	0.65	0.405

Medida	Peso lb/ft	kg/m	Área A in 2	Peralte D in	Patón B in	Tf in	Alma Tw in
W21 (21X8 1/4)	62	92.7	18.3	20.99	8.24	0.62	0.4
W21 (21X8 1/4)	68	101.3	20	21.13	8.27	0.69	0.43
W21 (21X8 1/4)	73	108.73	21.5	21.24	8.3	0.74	0.455
W21 (21X8 1/4)	83	123.62	24.3	21.43	8.36	0.835	0.515
W21 (21X8 1/4)	93	138	27.3	21.62	8.42	0.93	0.58
W21 (21X12 1/4)	101	150.44	29.8	21.36	12.29	0.8	0.5
W21 (21X12 1/4)	111	165.33	32.7	21.51	12.34	0.875	0.55
W21 (21X12 1/4)	122	182	35.9	21.68	12.44	0.96	0.6
W21 (21X12 1/4)	132	196	38.8	21.83	12.44	1.04	0.65
W21 (21X12 1/4)	147	218.96	43.2	22.06	12.51	1.15	0.72
W24 (24X7)	55	81.93	16.2	23.57	7.01	0.505	0.395
W24 (24X7)	62	92	18.2	23.74	7.04	0.59	0.43
W24 (24X9)	68	101.2	20.1	23.73	8.97	0.59	0.42
W24 (24X9)	76	113.4	22.4	23.92	8.99	0.68	0.44
W24 (24X9)	84	125.12	24.7	24.1	9.02	0.77	0.47
W24 (24X9)	94	139.92	27.7	24.31	9.07	0.88	0.52
W24 (24X9)	103	153	30.3	24.53	9	0.98	0.55
W24 (24X12 3/4)	104	154.9	30.6	24.06	12.75	0.75	0.5
W24 (24X12 3/4)	117	174	35.09	24.25	12.8	0.85	0.55
W24 (24X12 3/4)	131	195.12	38.5	24.48	12.86	0.96	0.605
W24 (24X12 3/4)	146	217.46	43	24.74	12.9	1.09	0.65
W24 (24X12 3/4)	162	241.29	47.7	25	12.96	1.22	0.705
W27 (27X10)	84	125.6	24.8	26.71	9.96	0.64	0.46
W27 (27X10)	94	140.01	27.7	26.92	9.99	0.745	0.49
W30 (30X10 1/2)	99	147	29.1	29.65	10.45	0.67	0.52
W30 (30X10 1/2)	108	161	31.7	29.83	10.47	0.76	0.545
W30 (30X10 1/2)	116	173	34.2	30.01	10.5	0.85	0.565
W30 (30X10 1/2)	132	196	38.9	30.31	10.55	1	0.615
W30 (30X10 1/2)	148	220	43.5	30.67	10.48	1.18	0.65
W33 (33X11 1/2)	118	175.7	34.7	32.86	11.48	0.74	0.55
W33 (33X11 1/2)	130	193.64	38.3	33.09	11.51	0.855	0.58
W33 (33X11 1/2)	141	210.02	41.6	33.3	11.54	0.96	0.605
W33 (33X11 1/2)	152	226.4	44.7	33.49	11.57	1.055	0.635
W33 (33X16)	241	358.97	70.9	34.18	15.86	1.4	0.83
W36 (36X12)	135	201.08	39.7	35.55	11.95	0.79	0.6
W36 (36X12)	150	223.43	44.2	35.85	11.98	0.94	0.625
W36 (36X12)	170	253.22	50	36.17	12.03	1.1	0.68
W36 (36X12)	194	289	57	36.49	12.11	1.26	0.765
W36 (36X12)	232	345	68.1	37.12	12.12	1.57	0.87

@ @mercadodeacerosmx

f @mercadodeaceros

4432281049

mercadodeaceros.com

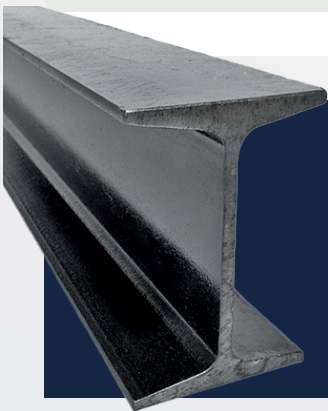




Canal U

Norma ASTM A36, A572 GR50

Peralte (d)		Patín (b)		Alma (tw)		Peso	
mm	Pulgadas	mm	Pulgadas	mm	Pulgadas	kg/m	lib/pie
76.2	3	34.8	1.37	3.35	0.13	5.21	3.5
		35.8	1.4	4.32	0.17	6.1	4.1
101.6	4	40.2	1.58	3.17	0.12	6.7	4.5
		40.2	1.58	4.67	0.18	8.04	5.4
152.4	6	48.7	1.91	5.1	0.2	12.2	8.2
		51.6	2.03	8	0.31	15.62	10.5
		54.9	2.16	11	0.43	19.34	13
203.2	8	57.4	2.25	5.6	0.22	17.11	11.5
		59.5	2.34	8	0.31	20.46	13.75
		64	2.51	12.4	0.48	27.93	18.75
254	10	66	2.59	6.1	0.24	22.8	15.3
		69.5	2.73	9.62	0.37	29.8	20
		73.3	2.88	13.36	0.52	37.2	25
		77	3.03	17.09	0.67	44.7	30
304.8	12	74.72	2.94	7.16	0.28	30.8	20.7
		77.39	3.04	9.83	0.38	37.2	25
		80.51	3.16	12.95	0.5	44.64	30
381	15	86	3.38	10.2	0.4	50.3	33.9
		89	3.5	13.2	0.51	59.1	40
		94	3.7	18.2	0.71	74.41	50



IPS

Norma ASTM A36

Medida	Patín (b)		Patín (b)		Espesor (tf)		Alma (tw)		Peso teórico	
	in	mm	in	mm	in	mm	in	mm	kg/m	lib/ft
4	4.000	101.6	2.663	67.6402	0.293	7.4422	0.193	4.9022	11.459	7.7
5	5.000	127	3.004	76.3016	0.326	8.2804	0.214	5.4356	14.882	10
6	6.000	152.4	3.332	84.6328	0.359	9.1186	0.232	5.8928	18.602	12.5

© @mercadodeacerosmx

Facebook @mercadodeaceros

© 4432281049

mercadodeaceros.com



Catálogo.

Perfiles comerciales.

#especialistasenacero

Redondo

Norma ASTM A36 y C. Comercial

Fracción	Medidas		kg/m real
	Milímetros	Pulgadas	
3/16	4.7	0.187	0.14
1/4	6.3	0.25	0.249
5/16	7.9	0.3125	0.388
3/8	9.5	0.375	0.559
1/2	12.7	0.5	0.994
5/8	15.9	0.625	1.55
3/4	19.1	0.75	2.235
7/8	22.2	0.875	3.05
1	25.4	1	3.97
1 1/8	28.6	1.125	5.02
1 1/4	31.8	1.25	6.21
1 3/8	34.9	1.37	7.55
1 1/2	38.1	1.5	8.94
1 5/8	41.3	1.62	10.49
1 3/4	44.5	1.75	12.17
1 7/8	47.7	1.87	13.97
2	50.8	2	15.89

Cuadrado

Norma ASTM A36 y C. Comercial

Fracción	Medidas		kg/m real
	Milímetros	Pulgadas	
3/8	9.5	0.375	0.71
1/2	12.7	0.5	1.26
5/8	15.9	0.625	1.97
3/4	19.1	0.75	2.84
7/8	22.2	0.875	3.87
1	25.4	1	5.06
1 1/8	28.6	1.125	6.4
1 1/4	31.8	1.25	7.9
1 1/2	38.1	1.5	11.39
1 3/4	44.5	1.75	15.49



Catálogo.

Perfiles comerciales.

#especialistasenacero

Redondo

Norma ASTM A36 y C. Comercial

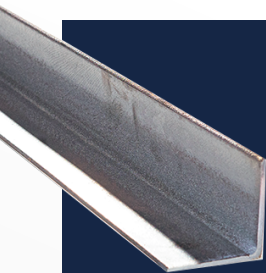
Fracción	Medidas		kg/m real
	Milímetros	Pulgadas	
3/16	4.7	0.187	0.14
1/4	6.3	0.25	0.249
5/16	7.9	0.3125	0.388
3/8	9.5	0.375	0.559
1/2	12.7	0.5	0.994
5/8	15.9	0.625	1.55
3/4	19.1	0.75	2.235
7/8	22.2	0.875	3.05
1	25.4	1	3.97
1 1/8	28.6	1.125	5.02
1 1/4	31.8	1.25	6.21
1 3/8	34.9	1.37	7.55
1 1/2	38.1	1.5	8.94
1 5/8	41.3	1.62	10.49
1 3/4	44.5	1.75	12.17
1 7/8	47.7	1.87	13.97
2	50.8	2	15.89

Cuadrado

Norma ASTM A36 y C. Comercial

Fracción	Medidas		kg/m real
	Milímetros	Pulgadas	
3/8	9.5	0.375	0.71
1/2	12.7	0.5	1.26
5/8	15.9	0.625	1.97
3/4	19.1	0.75	2.84
7/8	22.2	0.875	3.87
1	25.4	1	5.06
1 1/8	28.6	1.125	6.4
1 1/4	31.8	1.25	7.9
1 1/2	38.1	1.5	11.39
1 3/4	44.5	1.75	15.49





Ángulo

Norma ASTM A36, A572 GR50, A529 GR50, A709

	Medidas		kg/m real	
	Pulgadas	Milímetros		
1/8	x 3/4	3.2	x 19.1	0.88
	x 1		x 25.4	1.19
	x 1 1/4		x 31.7	1.5
	x 1 1/2		x 38.1	1.83
	x 2		x 50.8	2.46
3/16	x 1	4.8	x 25.4	1.73
	x 1 1/4		x 31.7	2.2
	x 1 1/2		x 38.1	2.68
	x 2		x 50.8	3.63
	x 2 1/2		x 63.5	4.6
	x 3		x 76.2	5.97
1/4	x 1	6.3	x 25.4	2.2
	x 1 1/4		x 31.7	2.86
	x 1 1/2		x 38.1	3.49
	x 2		x 50.8	4.75
	x 2 1/2		x 63.5	6.1
	x 3		x 76.2	7.29
	x 3 1/2		x 88.9	8.63
	x 4		x 101.6	9.9
	x 4x3		x 101.6 x 76.3	8.63
	x 4x6		x 101.6 x 152.4	18.3
5/16	x 2	7.9	x 50.8	5.84
	x 2 1/2		x 63.5	7.44
	x 3		x 76.2	9.08
	x 3 1/2		x 88.9	10.71
	x 4		x 101.6	12.2
	x 4x3		x 101.6 x 76.3	12.65
3/8	x 2	9.5	x 50.8	6.99
	x 2 1/2		x 63.5	8.78
	x 3		x 76.2	10.72
	x 4		x 101.6	14.58
	x 5		x 127.0	18.3
	x 6		x 152.4	22.17
	x 4 x 3		x 101.6 x 76.3	12.65
	x 4 x 6		x 101.6 x 152.4	18.3
	x 11/2	12.7	x 38.1	3.798
	x 2		x 50.8	5.064
1/2	x 2 1/2		x 63.5	11.831
	x 3		x 76.2	13.9
	x 4		x 101.6	19.05
	x 5		x 127.0	24.11
	x 6		x 152.4	29.17
	x 4 x 3		x 101.6 x 76.3	16.52
	x 4 x 6		x 101.6 x 152.4	24.11
	x 101.6 x 152.4		x 101.6	23.36
5/8	x 6	15.9	x 152.4	36.01
	x 4 x 3		x 101.6 x 76.3	20.24
	x 4 x 6		x 101.6 x 152.4	29.76
	x 101.6 x 152.4		x 101.6	27.53
3/4	x 6	19	x 152.4	42.71
	x 4 x 3		x 101.6 x 76.3	23.81
	x 4 x 6		x 101.6 x 152.4	35.12
	x 152.4 x 101.6		x 152.4	55.66
1	x 6 x 4	25.4	x 152.4 x 101.6	45.54



Solera

Norma ASTM A36, A709 y C. Comercial

	Medidas		kg/m real	
	Pulgadas	Milímetros		
1/8*	x 1/2	3.2	x 12.7	0.317
	x 3/4		x 19.1	0.474
	x 1		x 25.4	0.633
	x 1 1/4		x 31.7	0.791
	x 1 1/2		x 38.1	0.95
	x 2		x 50.8	1.26
3/16*	x 1/2	4.8	x 12.7	0.474
	x 3/4		x 19.1	0.712
	x 1		x 25.4	0.95
	x 1 1/4		x 31.7	1.187
	x 1 1/2		x 38.1	1.424
	x 2		x 50.8	1.899
1/4	x 2 1/2		x 63.5	2.373
	x 1/2	6.3	x 12.7	0.633
	x 3/4		x 19.1	0.95
	x 1		x 25.4	1.266
	x 1 1/4		x 31.7	1.583
	x 1 1/2		x 38.1	1.899
5/16	x 2		x 50.8	2.532
	x 2 1/2		x 63.5	3.165
	x 3		x 76.2	3.796
	x 4		x 101.6	5.064
	x 5		x 127.0	6.33
	x 6		x 152.4	7.592
	x 8		x 203.2	10.12
	x 1 1/4	7.9	x 31.7	1.973
	x 1 1/2		x 38.1	2.37
	x 2		x 50.8	3.17
3/8	x 2 1/2		x 63.5	3.96
	x 3		x 76.2	4.75
	x 4		x 101.6	6.32
	x 6		x 152.4	9.5
	x 1	9.5	x 25.4	1.899
	x 1 1/4		x 31.7	2.376
1/2	x 1 1/2		x 38.1	2.849
	x 2		x 50.8	3.798
	x 2 1/2		x 63.5	4.748
	x 3		x 76.2	5.698
	x 4		x 101.6	7.597
	x 6		x 152.4	11.396
	x 8		x 203.2	15.194
	x 1 1/2	12.7	x 38.1	3.798
	x 2		x 50.8	5.064
	x 2 1/2		x 63.5	6.331
5/8	x 3		x 76.2	7.597
	x 4		x 101.6	10.129
	x 5		x 127.0	12.66
	x 6		x 152.4	15.194
	x 8		x 203.2	20.258
	x 10		x 254.0	25.32
	x 1 1/2	15.9	x 38.1	4.748
	x 2		x 50.8	6.331
	x 2 1/2		x 63.5	7.913
	x 3		x 76.2	9.496
3/4	x 4		x 101.6	12.661
	x 5		x 127.0	15.83
	x 6		x 152.4	18.992
	x 8		x 203.2	25.322
	x 2	19.1	x 50.8	7.597
	x 2 1/2		x 63.5	9.496
	x 3		x 76.2	11.395
	x 4		x 101.6	15.194
	x 5		x 127.0	18.99
	x 6		x 152.4	22.79
1	x 8		x 203.2	30.388
	x 2	25.4	x 50.8	10.129
	x 3		x 76.2	15.194
	x 4		x 101.6	20.258
	x 6		x 152.4	30.388
	x 8		x 203.2	40.516

@mercadodeacerosmx

@mercadodeaceros

4432281049

mercadodeaceros.com



Alambrón

Norma NMX-B-365

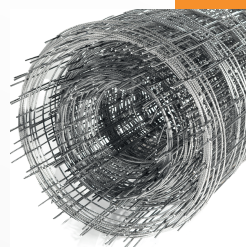
Pulgadas	Fracción	Milímetros	Kg / m
1/4	0.25	6.35	0.249



Alambre Recocido

Cal. 16

Rollos de 60 a 70 kg x pza



Malla electrosoldada

Norma NMX-B-253, NMX-B290

Tipo	Diámetro del alambre (mm)	Peso (kg/m ²)	Rollo	Hoja
6x6 4/4	5.72	2.68	2.50 x 40 m	2.50 x 6 m
6x6 6/6	4.88	1.95	2.50 x 40 m	2.50 x 6 m
6x6 8/8	4.11	1.38	2.50 x 40 m	2.50 x 6 m
6x6 10/10	3.43	0.95	2.50 x 40 m	2.50 x 6 m



Varilla Corrugada

Norma NMX-B-506 (R-42) y Norma NMX-B-72 (R-6000)

No.	Diámetro del alambre (mm)	Diámetro del alambre (pulgadas)	Área en cm ²	Perímetro en cm	Kg x ml	Pzas x ton (Aprox)
**-	--	5/32	0.12	--	0.1	1666
**-	--	3/16	0.18	--	0.133	1253
**-	--	1/4	0.32	--	0.25	667
**-	--	5/16	0.49	--	0.384	434
*2.5	7.9	5/16	0.49	2.48	0.384	217
*3	9.5	3/8	0.71	2.98	0.557	150
*4	12.7	1/2	1.27	3.99	0.996	84
*5	15.9	5/8	1.99	5	1.58	53
*6	19.1	3/4	2.87	6	2.25	37
*8	25.4	1	5.07	7.98	3.975	21
*10	31.8	1 1/4	7.94	9.99	6.225	13
*12	38.1	1 1/2	11.4	11.97	8.938	9



Mercado de Aceros

📍 @mercadodeacerosmx

📘 @mercadodeaceros

☎ 4432281049

#especialistasenacero

